



## LOCATEE SNEAK PEEK

# Your Office Building's Brain

Locatee is the workspace analytics platform that enables you to make fact-based and faster real estate decisions while shaping the way employees interact with your office buildings.

### Office buildings are inefficient and not occupant-oriented

Today's workforce is more mobile and flexible than ever, resulting in offices often only occupied less than 50%. An inefficient use of office space is expensive and has a negative long-term impact on the productivity and satisfaction of your employees.

### We help you to overcome the challenges in your office buildings

Locatee is a patent-pending software solution that utilises machine learning and indoor positioning algorithms. The solution provides detailed insights into the space utilisation of your office buildings.

### More than 50 possible applications to create efficient office buildings

Locatee creates significant business benefits, from portfolio-wide space optimisation to optimising operating costs of specific buildings and improvements in the user experience of each individual employee.



#### Office buildings are utilised less than 50%

Analyse how your office buildings are utilised and identify locations with the greatest optimisation potential.



#### A workspace costs EUR 10.000 p.a.

Realise operational potential and align the building's resources to employees' needs, to increase employee wellness and retention rate.

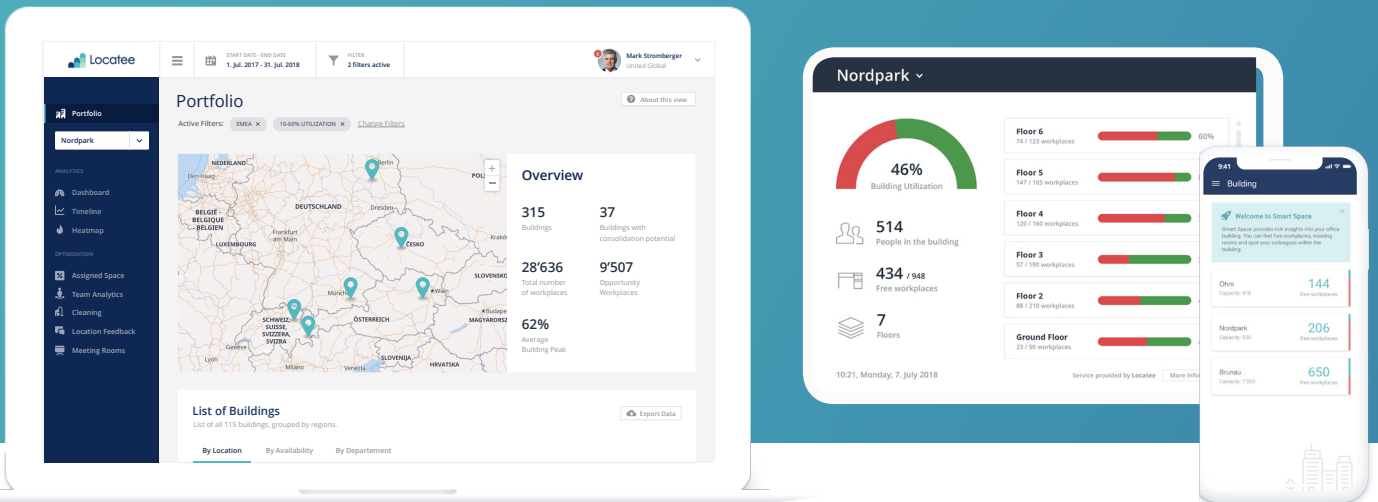


#### 50% of employees are unproductive

Improve the user experience to increase the satisfaction and productivity of your employees.

# The Solution for Workspace Analytics

## Locatee Analytics, Smart Signage and Smart Space



### Analysis of existing data sources

Locatee leverages existing data sources from your IT infrastructure for global scalability. Further data sources such as sensors can be integrated to combine the advantages of different technologies and gain more granular insights where required. The continuous analysis of data enables Corporate Real Estate Managers and CFOs to identify portfolio-wide strategic savings potential and allows Facilities Managers to realise operational savings potential. Moreover, Corporate Real Estate and HR teams are given the opportunity to personalise each employee's workspace experience.

### Scalable and cost-efficient

You always have a complete overview of your whole real estate portfolio, no matter how large it is or how many locations it contains.



## Valuable insights in real time

With the detailed insights in real time on utilisation, you can make objective, data-based decisions and maintain consistent success monitoring thanks to reliable performance indicators.

## Compliance with data protection regulations

Receive detailed information in compliance with privacy and security regulations. Strict anonymisation safeguards your employees' privacy.



### Portfolio Management

Identify portfolio-wide optimisation potential and develop your real estate strategy with confidence based on objective space utilisation data.



### Facilities Operations

Realise savings potential in your office buildings through improved space provision and more efficient facilities operations.



### Workspace Experience

Personalise the workspace experience for your employees to increase productivity and wellbeing. Enable them to easily locate available workspaces and meeting rooms.



«Understanding how an organisation uses its workspace is fundamental to creating an effective and efficient working environment. Thanks to Locatee Analytics we were able to obtain granular insights into our space utilisation and take workspace decisions with great confidence; simply based on our existing IT infrastructure!»

#### Nicole Stutz

Office & Facility Management, Biogen International GmbH

## Organisations with office buildings spread over 6 continents rely on Locatee:



Locatee is an open platform enabling occupant-oriented office buildings.

Utilise the optimisation potential of your office spaces!

We look forward to hearing from you.

Locatee AG  
Albisriederstrasse 243a, 8047 Zurich, Switzerland

+41 43 508 51 23

info@locatee.ch, www.locatee.ch