

## FACT SHEET

# Simply Smarter Workplace Analytics



Locatee is the leading workplace analytics solution that enables corporate real estate leaders and managers to make fact-based and confident decisions about their real estate portfolio while enhancing the way employees interact with their office space.

## One of your most expensive operating costs is greatly misused

Office space is the most expensive cost for a business after salaries. Yet despite this, businesses around the world waste hundreds of billions per year on unused space. A report by [Abintra Consulting](#) shows that in developed markets like the UK, firms with more than 250 employees spend altogether over £10,000,000 per year on unutilised office space. This is unnecessarily expensive and also has a negative long-term impact on a company's workforce.

## Cut costs and make more informed decisions with Locatee

What if you could actually see accurate information on the amount of space your business actually needs per floor, building, city, country, and continent? With Locatee, you can do exactly that.

Our solution comprises patented software and algorithms which transform multiple sources of data into detailed insights, so you can better understand how your workspaces are being used across your entire corporate real estate portfolio.

## A better workplace experience

Locatee also helps employees navigate large workplaces easily with features such as a Smart Signage solution for tablets and a Smart Space app for Android and iOS.



### 40% of your office spaces is most likely sitting empty

The increasing frequency of out of office meetings, working from home, and extended weekends means many buildings see less utilisation than in the past.

Source: CBRE



### A single workstation costs on average €10,000 per year

An adjustment on a single floor in an office can translate to tens of thousands Euros saved in rent, IT, insurance, and facility expenses.

Source: Regus



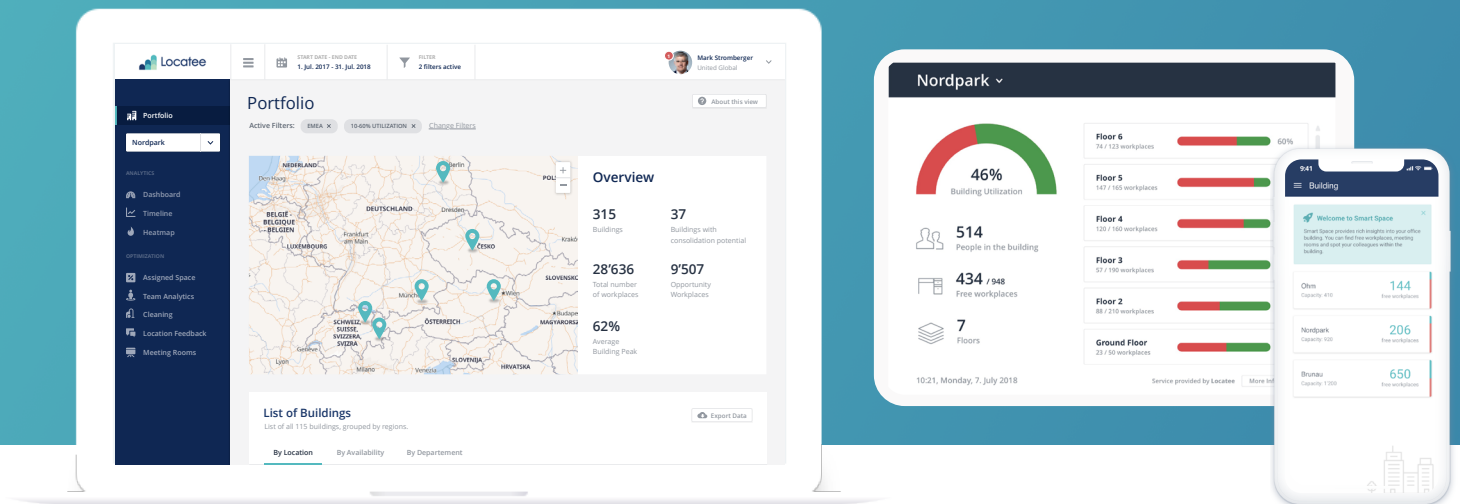
### The average employee spends 27 hours per year just looking for a space to meet

Workers waste as much as an hour each week trying to find meeting rooms, free desks, and colleagues.

Source: Gartner

# An end-to-end solution for workplace analytics

Introducing Locatee Analytics,  
Smart Signage, and the Smart Space app



## Locatee surfaces data you didn't know you had

Locatee's solution leverages data from your company's existing LAN and Wi-Fi infrastructure. Information from other sources such as sensors and device inventory systems can also be integrated. Collating the data together with floorplans and other location attributes using patented technology, Locatee visualises real-time and aggregate information on how corporate real estate is being used. Locatee thus empowers leaders like Corporate Real Estate Managers, Facility Managers, and CFOs to make confident, fact-based decisions about their workplace and real estate portfolio.

## Scalable, cost-efficient, and flexible

Compared to other market solutions, Locatee is both more scalable and more cost efficient. Because Locatee can collect data using your company's existing Wi-Fi and LAN networks, minimal setup and maintenance is required to get started. Flexible pricing also gives you control over how many buildings you want to measure and to which degree of granularity.



## Intelligence at your fingertips

Locatee measures office utilisation both over time and in real time, so you can easily see the most and least popular areas of your buildings, identify savings and growth potential, and quickly find the workspace you want.

## Secure and GDPR-compliant

Locatee takes stringent measures to comply with local and international data privacy policies. To provide maximum data protection to employees, all data are anonymised and are encrypted both in transit and at rest.



### Locatee for Portfolio Insights

Develop your real estate strategy with confidence based on the most accurate space utilisation data.



### Locatee for Workplace Operations

Reduce the risk of poor seating allocation and overspending; provide the right workspace setup for employees.



### Locatee for Workplace Experience

Navigate your office buildings effortlessly, find colleagues with ease, and experience your workplace's full potential.

« After the successful pilot programs in Munich and Bratislava, we were so pleased with the scalability and the overall success that a global rollout was the obvious way to go. Today we are optimising workspace on 6 continents.»

**Andrea Ruhl**

Head Connectivity Services and Information Technology, Swiss Re

You're in great company.

Here are just a few organisations relying on Locatee in their offices around the globe.



Swiss Re



Biogen



ZURICH



EY



upc

SWISS POST

Locatee is the leading workplace analytics solution that transforms complex data into space utilisation insights.

Want to learn more about how Locatee can help optimise your office and reduce costs?  
We look forward to hearing from you.

Locatee AG  
Albisriederstrasse 243a, 8047 Zurich, Switzerland

+41 43 508 51 23  
[info@locatee.com](mailto:info@locatee.com), [www.locatee.com](http://www.locatee.com)