

Portfolio Analysis Report

Utilization Insights and Portfolio Overview

United States of America

Period:

October 17 - November 11, 2022 (last four weeks)



Information and Report Takeaways

Information

Data source	Locatee Analytics (IT network infrastructure/ Wi-Fi connected devices)
Data collection	Data is collected every 5 minutes. Detecting a connected device at the time of measurement occupies the space it is located to.
Data scope	Your Company buildings located in the United States of America.

Metric definitions

Average utilization	The average of recorded utilization levels over a defined time period.
Absolute peak	The maximum recorded utilization level of a defined time period.
People count	The total number of distinct people counted in a day. In case of multiple days, the average or absolute (maximum) is used.
Capacity	The maximum amount of people the given unit is able to contain.
Metric (%)	The given 'metric' divided by Capacity.

Report takeaways

The top takeaways from the following report are listed here. These insights can be used as starting points when interpreting the displayed graphs and data.

- The nine buildings located in State 4 display the highest utilization. A couple of buildings showcase very high peaks, it would be worth to investigate these instances with the Locatee Analytics dashboard.
- Buildings located in State 2 and State 3 showcase very low levels of utilization, both in terms of average and peak. There seems to be potential for consolidating buildings or floors.
- State 4 seems to have a significant growth in utilization over the last twelve weeks, whereas other states have remained largely consistent. (see Time Trends)

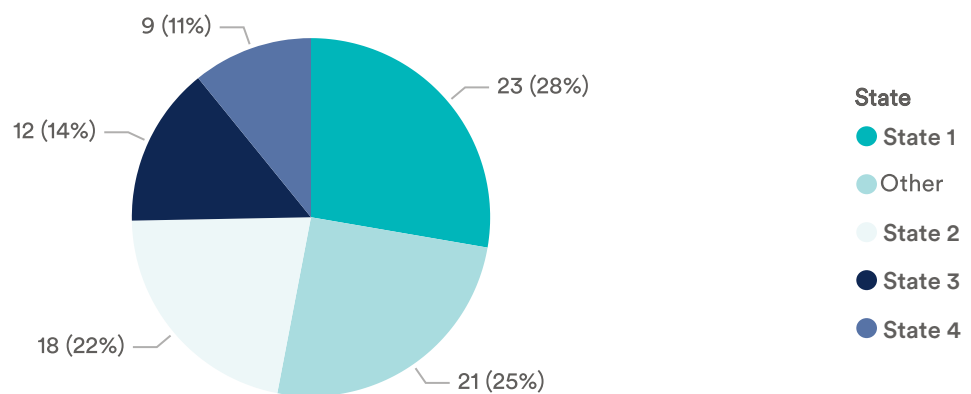
Portfolio Overview

Period: October 17 - November 11, 2022 (last four weeks)

This section is used to gain an understanding of how utilization of buildings included in the portfolio varies depending on the region. In this report portfolio is limited to buildings located in the United States only.

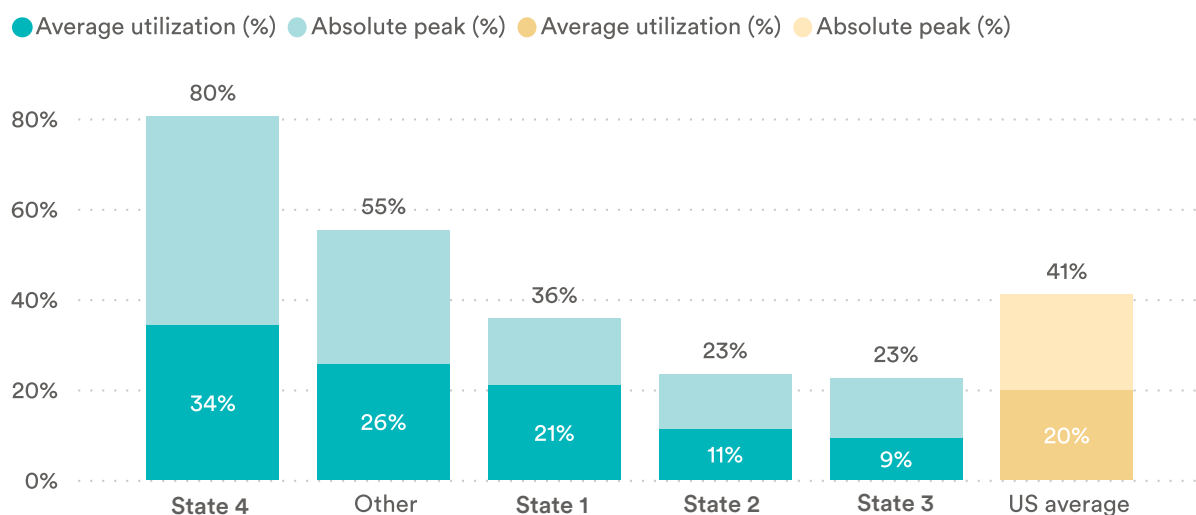
[Locatee Analytics Portfolio Overview](#)

Portfolio Structure by State



The above graph presents the number of all buildings included in the portfolio by state. In case when the number of buildings per state was lower than 5, the building was included in the category "Other".

State KPIs



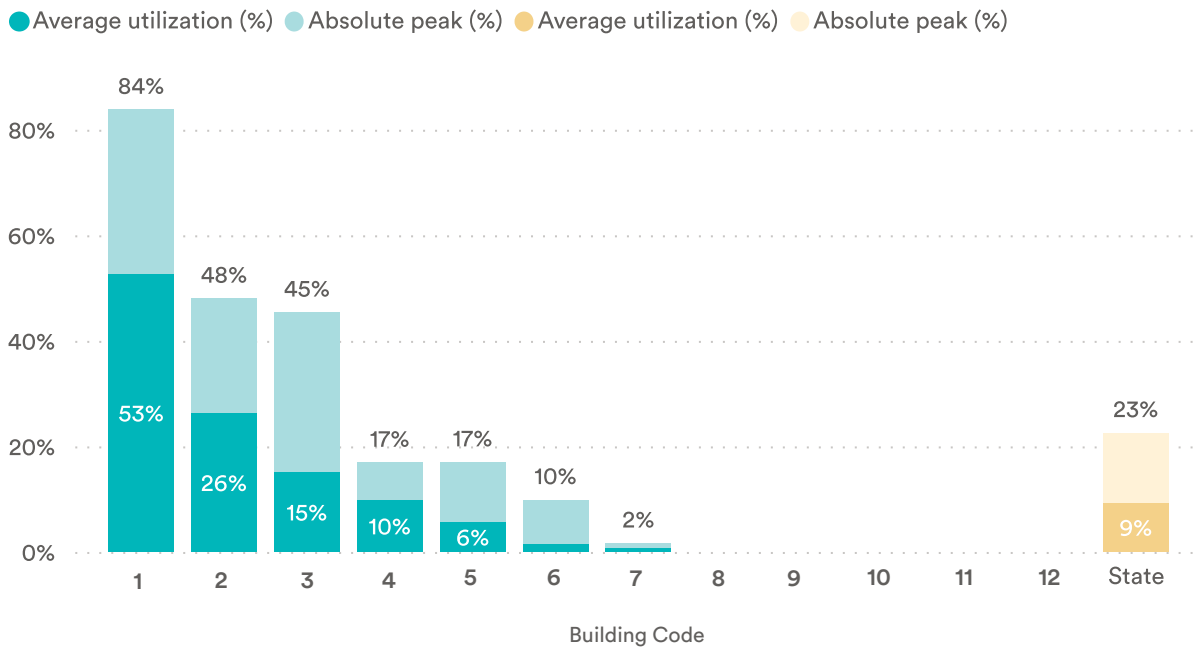
Here you can see the average utilization metrics for all of your buildings located in a particular state. The "US average" is an aggregated average of metrics calculated for all buildings included in your portfolio. This combination can help you understand which location sites are characterized by the highest and lowest utilization as compared to the overall portfolio.

Portfolio Overview

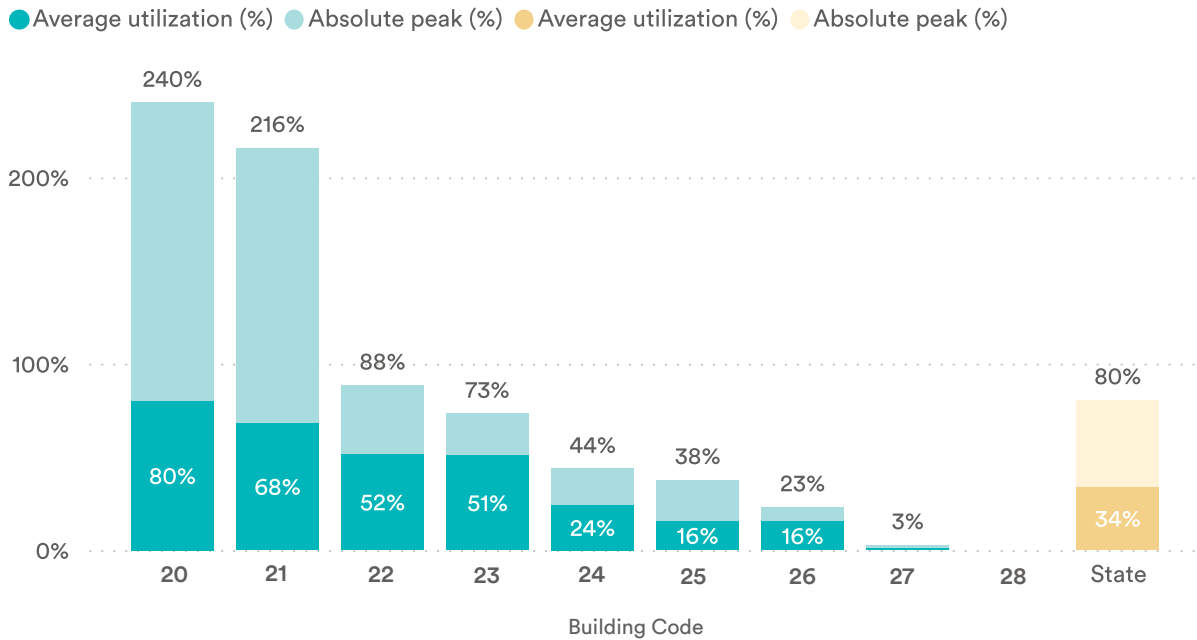
Period: October 17 - November 11, 2022 (last four weeks)

This section displays the utilization and peaks for the buildings located in the given state, relative to the average "State" metrics. It allows to easily identify the highest and lowest utilized buildings on a state level. To gain a detailed understanding of office utilization metrics for a selected building, we can prepare a "Spotlight Report", offering a deep dive into key KPIs and people behavior patterns.

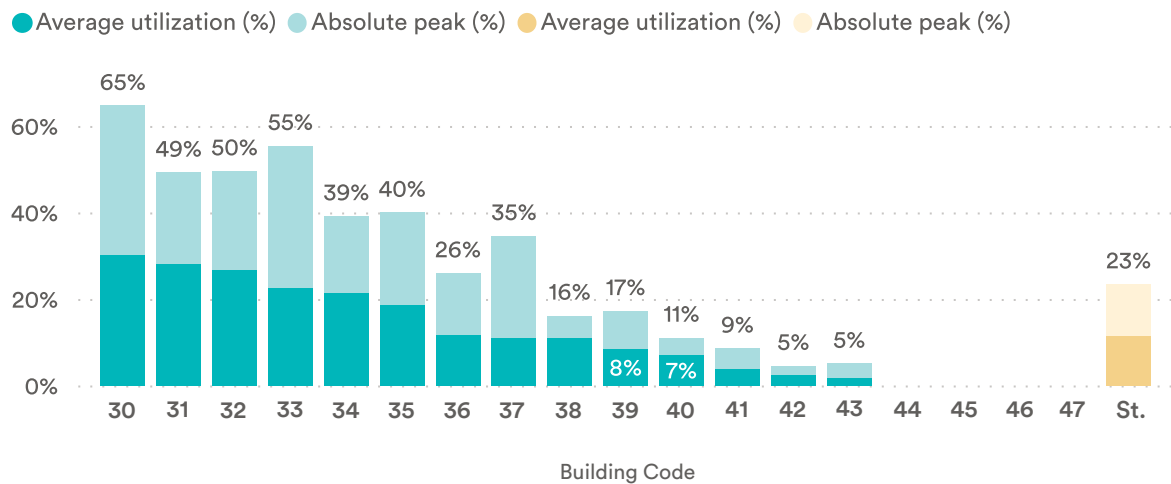
Building KPIs - State 3



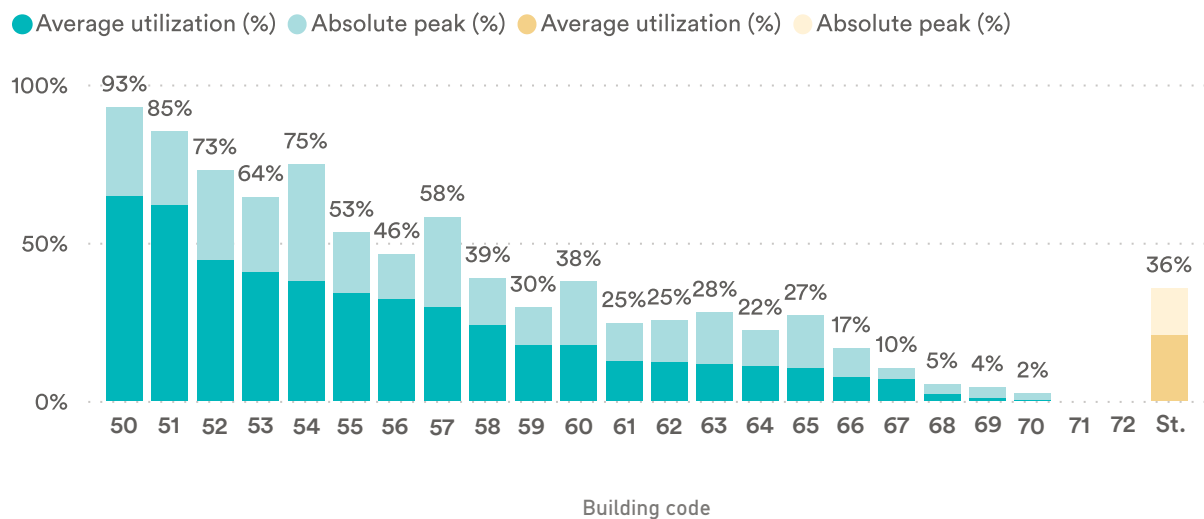
Building KPIs - State 4



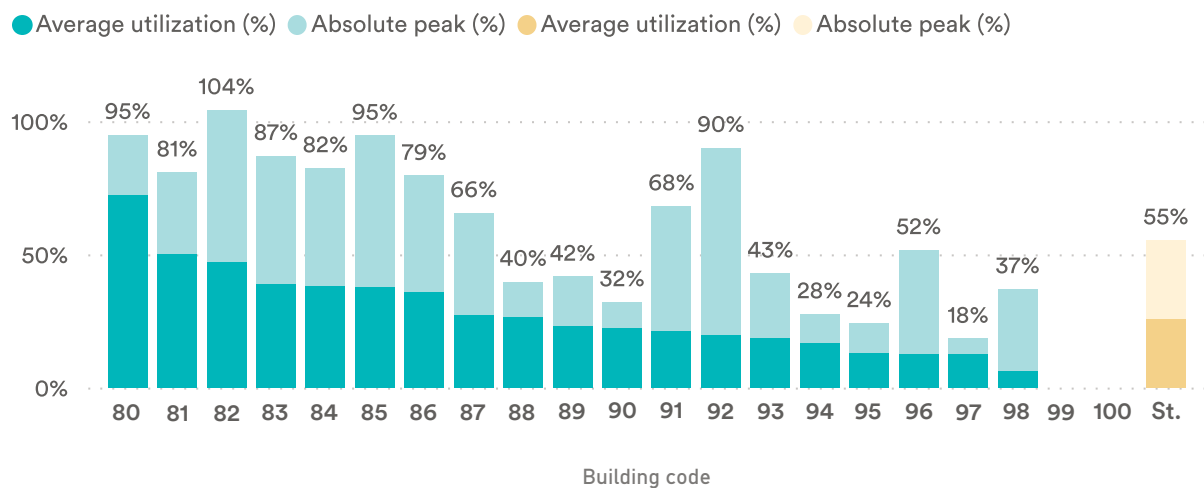
Building KPIs - State 2



Building KPIs - State 1



Building KPIs - Other

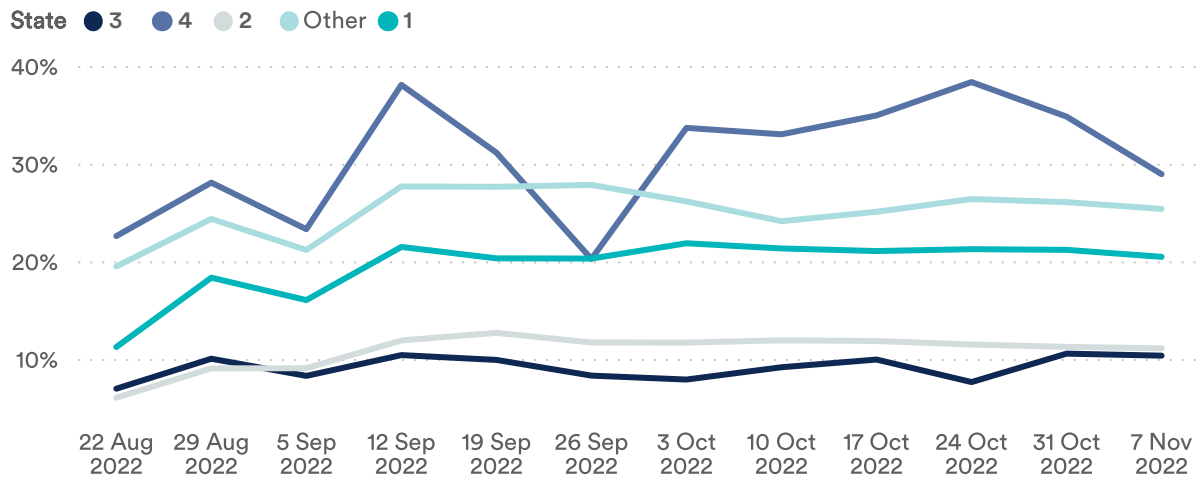


Time Trends

Period: August 22 - November 11, 2022 (last twelve weeks)

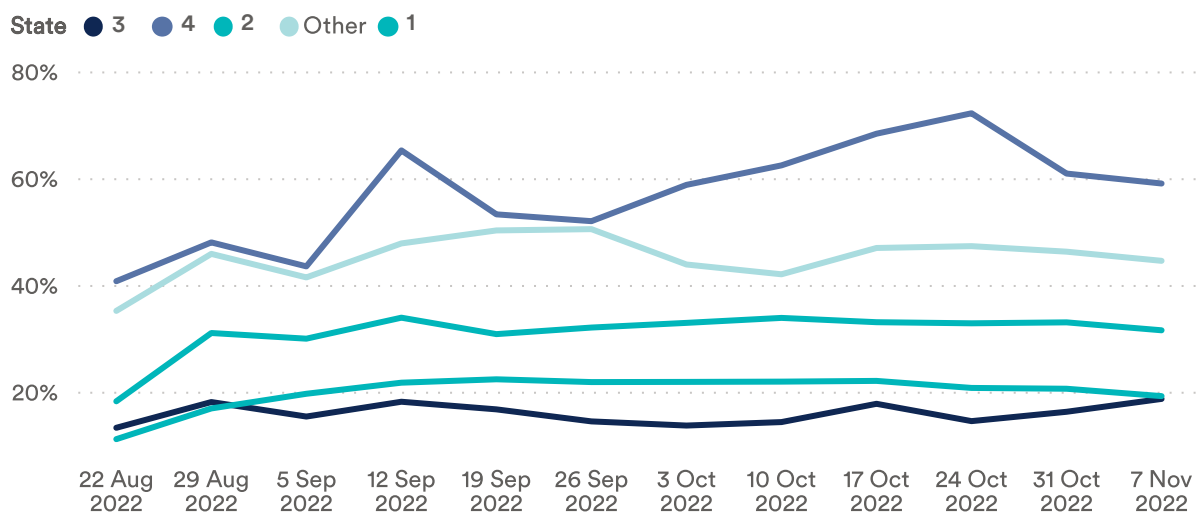
This section gives insight into changes in portfolio utilization that happened over the last three months. By comparing time trends across regions, you can spot patterns as well as differences related to the direction of changes (increase or decrease in utilization) and pace at which these changes took place.

Average utilization (%) by State



Historical data presented in the above graph is useful to see how the average level of utilization fluctuated over time. Average utilization is a metric that is not significantly affected by exceptional events characterized by high office attendance (special events etc.).

Absolute peak (%) by State



Absolute peak is a useful measure especially when office attendance is uneven throughout the week or month. The the absolute peak time trend gives insights into the development of the highest building utilizations located in the different states and when office utilization surpassed the target.